

LEAN GAS TREATMENT RTO

Poor gas treatment plants are used for gas mixtures with a calorific value from approx. 1 kW thermal to 3.5 kW thermal.

They are used for the safe, oxidative disposal of non-combustible gases.

Areas of application

- ✓ Landfills at the end of their useful life (replaces the gas flare)
- ✓ Offgas utilization in gas processing plants
- ✓ Gas utilization in industrial production processes

Execution

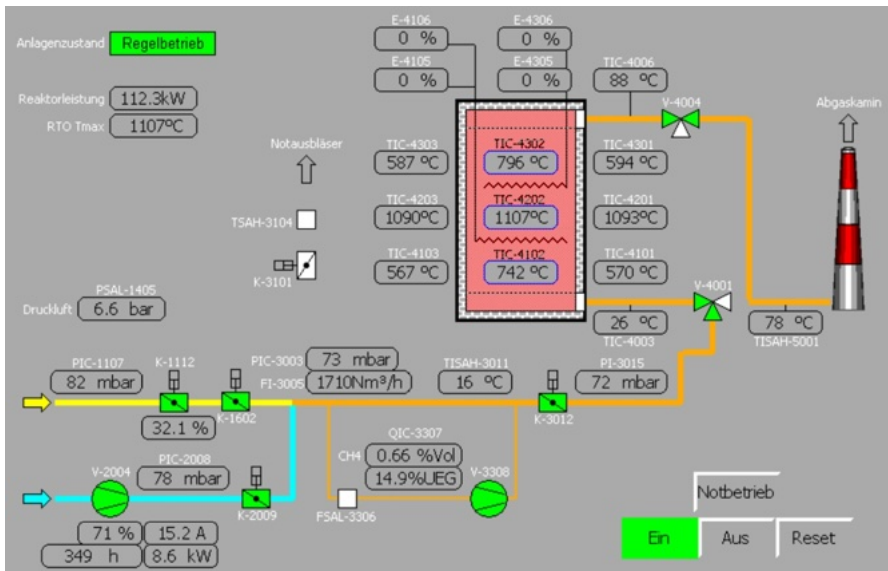
Within the Gastechnik Himmel **RTO type Heos** the off-gas is diluted with fresh air and passed over a reactor bed. Organic compounds are oxidized flamelessly at temperatures over 1000 °C . The heating-up operation takes place electrically, so no additional burner system or auxiliary firing is necessary and therefore it's low in NOx.

The off-gas to be treated must have a calorific value of at least 10 kWth to ensure autothermal operation.



The temperature in the reactor shifts in the direction of flow so the direction is changed in a switch box depending on the temperature. The reactor thus acts as a recuperative heat exchanger.

The hot exhaust gas cools down again at the reactor outlet and is discharged via the exhaust gas stack.



Type	TH Power kWth	El. Heating kW	Weight t
Heos 50	10 - 50	15	~5
Heos 100	20 - 100	20	~6
Heos 150	30 - 150	20	~8
Heos 250	50 - 250	30	~10